



Kumera Power Transmission Group

Kumera Drives Ltd

Kumera Antriebstechnik GmbH

Kumera (China) Co., Ltd.

Kumera AS



Kumera

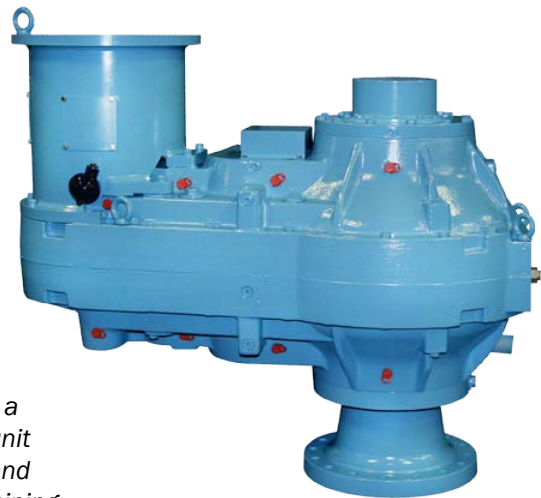
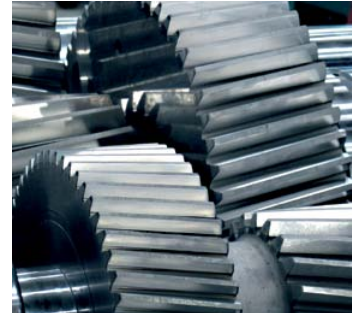
KUMERA

Kumera Drives Ltd.

Kumera Drives Ltd, Finland, is a parent company of Kumera Power Transmission Group. The expertise of Kumera Drives is focused on pulp and paper, mining and mineral industries. Understanding the requirements for drives in the process industry, combined with innovative R&D operations, has kept us as one of the major players in the power transmission sector in the world. One goal of all our operations is to improve the customers' efficiency in their processes by using innovative power transmission solutions.

We are carrying out our product development work in close collaboration with our customers, original equipment manufacturers (OEMs), research institutes and end-users. This cooperation enables us to adapt the latest technology and new demands set for power transmissions equipment.

Kumera Drives is a prominent gear unit supplier in pulp and paper industry, mining and mineral industry and various materials handling.



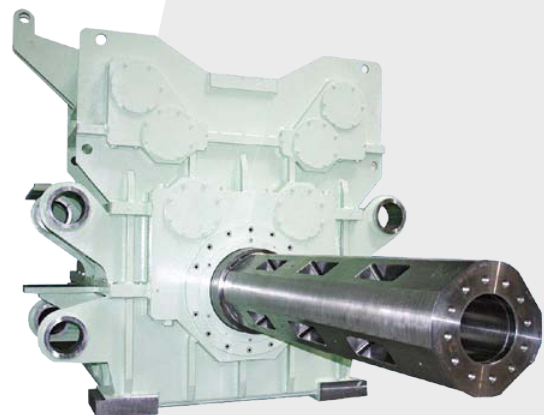
Kumera Antriebstechnik GmbH

Kumera Antriebstechnik GmbH represents long industrial traditions in mechanical workshop industry and conforms to the latest gear manufacturing technology. With high competence and long experience the company provides optimized solutions on a high quality level.

Kumera Antriebstechnik GmbH serves customers by supplying gears, tailor-made gearboxes and complete customized drive units. Beside the expertise in supplying yankee cylinder drives for paper machines the company produces special gearboxes for power sawing, rolling mills, hydro-power and many other applications.



New Generation Yankee cylinder drive



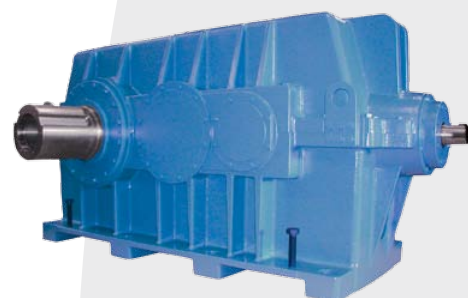
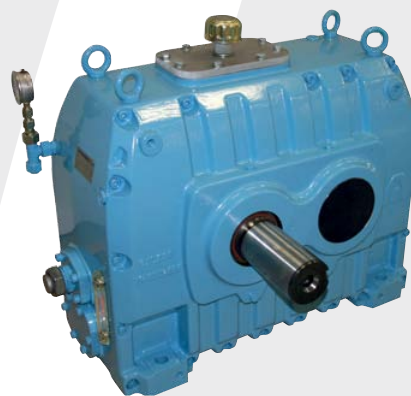
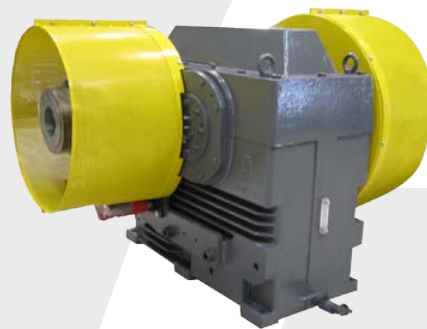
KUMERA (China) Co., Ltd.

Kumera (China) CO., Ltd. is a new resource within Kumera Corporation serving local customers in China. The plant is a fully equipped gear factory comprising modern machinery including milling and grinding capacity, a heat treatment facility and a painting booth.

The product offering includes middle-sized and large gearboxes for the specific industries with either standard or tailor-made solutions.

The plant enjoys a favourable location on the east coast being 50 km from Shanghai with good access by train and highway connections.

Kumera (China) acts as Central hub location for the service activities for Asian markets having most spare parts available at the Kunshan plant as well as competent service personal.



Kumera AS

Kumera AS in Norway is our marine transmission division of the Power Transmission Group. The NORGEAR brand has a long established record in marketing and manufacturing of marine transmissions.

Tugs and offshore support vessels, utilizing the power of the main engines via front-end gearboxes are the core market for Kumera NORGEAR products. The range of gearboxes includes PTO solutions for various auxiliary drives, with emphasis on designs for fire-fighting vessels.

In 2010 Kumera introduced the NORGEAR HYBRID Green Gear, where our gearbox is placed in the shaft line, guiding both diesel- and electrical power to the propulsion. This will enable fuel and maintenance savings and reduced NOx/CO2 when in standby- or transit mode.

The NORGEAR HYBRID gear comes with a well proven soft engagement clutch, which secures a smooth engagement of the propulsion units, and optional integrated Fi-Fi pumps, deck machinery pumps and shaft alternators. As a typical standard Kumera Power Transmission product it is available in both vertical and horizontal shaft offsets, suitable for various design of engine room installations.



Front-end gearboxes for tugs and offshore vessels, drives for propulsion and offshore fire water pumps, are applications included in the NORGEAR range of marine transmissions from Kumera AS.



KUMERA

Kumera Service

Kumera Drives has an extensive offering for gear service, from delivery of spare and wearing parts to comprehensive repair and maintenance projects and service contracts.

Our service engineers are available 24 hour a day – phone +358 400 300 644.



Kumera Product Range



HELICAL GEAR UNITS,
CUMPACT F-RANGE



HELICAL GEAR UNITS,
CUMPACT G-RANGE



ONE STAGE HELICAL
GEAR UNITS
KUMERA LX-RANGE



HEAVY DUTY HELICAL
GEAR UNITS,
CUMERA D-RANGE



BEVEL GEAR UNITS,
CUMPACT F-RANGE



BEVEL GEAR UNITS,
CUMPACT G-RANGE



HEAVY DUTY BEVEL
GEAR UNITS,
D-RANGE



AGITATOR GEAR UNITS,
SG-RANGE



HEAVY DUTY AGITATOR
GEAR UNITS,
E-RANGE



WORM GEAR UNITS,
COVERA RANGE



COMBINATION HELICAL AND
WORM GEAR UNITS,
COVERA RANGE



DOUBLE WORM GEAR UNITS,
COVERA RANGE



WIND UP AND UNWIND
GEAR UNITS,
LP-RANGE



ONE STAGE HELICAL
GEAR UNITS,
CUMERA LH-RANGE



YANKEE CYLINDER
GEAR UNITS



SPECIAL GEAR UNITS



RIGHT ANGLE GEAR UNITS,
NORGEAR-RANGE



FRONT-END DUAL PTO,
NORGEAR-RANGE



INTEGRATED ROLL
GEAR UNITS,
TP-RANGE



PLANETARY
GEAR UNITS,
P-RANGE



Kumera Power Transmission Group



KUMERA DRIVES OY

Kumerankatu 2
FI-11100 Riihimäki
FINLAND
Tel. +358 20 755 4200
Fax: +358 20 755 4220
E-mail: drives@kumera.com



KUMERA ANTRIEBSTECHNIK GMBH

Raiffeisenstrasse 38-40
A-8010 Graz
AUSTRIA
Tel. +43 316 471 524-0
Fax: +43 316 462 550
E-mail: kumera.graz@kumera.com



KUMERA (CHINA) CO, LTD.

168 Meifeng Road
Kunshan 215300, Jiangsu
CHINA
Tel. +86 512 503 61701
Fax: +86 512 503 61710
E-mail: kumerachina@kumera.com



KUMERA AS

P.O. Box 2043
N-3202 Sandefjord
NORWAY
Tel. +47 33 48 54 54
Fax: +47 33 48 54 55
E-mail: sales@kumera.no